



How to insert a hearing aid with thin tube fitting & dome

CamTAD Office

London Road Community Hospital
London Road
Derby DE1 2QY

Direct Tel: 01332 258143

E-mail: camtad@camtad.org
Website: www.camtad.org

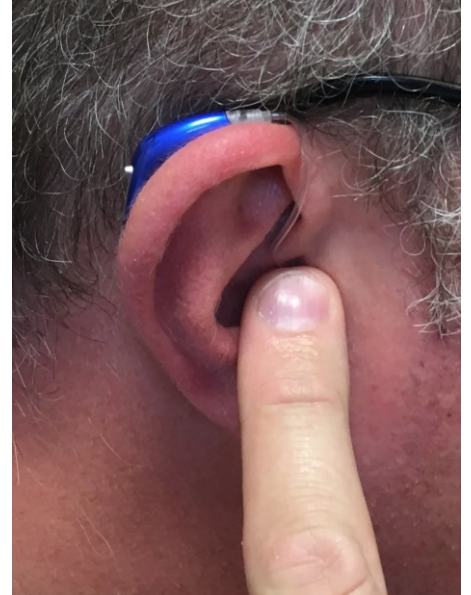
Step one:

Place the hearing aid behind the ear.



Step two:

Push the dome so that it sits just inside the ear canal.



Step three:

Lift the retainer (also known as a tail) into the ear.



Step four:

The retainer will keep the hearing aid secure so that it won't fall off your ear.



Supported by:

Southern Derbyshire Clinical Commissioning Group & University Hospitals of Derby & Burton NHS Foundation Trust

Patron – Professor Owen Judd, BMedSci (Hons), BM, BS, MRCPs (Glas), FRCS (Ed), FRCS (ORL-HNS), FRSA, PGDipClinEd, DCH

Charity Registration No. 517590